

POTTM PTCA^{NC}

Balloon Dilatation Catheter

Technical Specifications

Catheter Type	Rx
Balloon Diameters (mm)	2.25, 2.5, 2.75, 3.0, 3.25, 3.5, 3.75, 4.0, 4.5, 5.0
Balloon Lengths (mm)	6, 8, 10, 12, 15
Nominal Pressure	12 atm
Rate Burst Pressure	22 atm (Ø2.25-4.0) 20 atm (Ø4.5-5.0)
Compliance	Non-compliant
Tip OD	0.0160
Tip Length	2.0mm (Ø2.25-3.0) 2.5mm (Ø3.25-5.0)
Distal Shaft OD	2.55F/2.6F
Proximal Shaft OD	2.0F
Guide Wire Compatibility	Max. 0.014"
Guide Catheter Compatibility	5F (Ø2.25-4.0) 6F (Ø4.5-5.0)
Shaft Length (cm)	140
Coating	<ul style="list-style-type: none"> Hydrophilic external surface coating from tip to adjacent guidewire port Silicone coating inside guidewire lumen

Ordering Information

Balloon Length	Balloon Diameter (mm)									
	Ø 2.25	Ø 2.5	Ø 2.75	Ø 3.0	Ø 3.25	Ø 3.5	Ø 3.75	Ø 4.0	Ø 4.5	Ø 5.0
6mm	833-2206	833-2506	833-2706	833-3006	833-3206	833-3506	833-3706	833-4006	833-4506	833-5006
8mm	833-2208	833-2508	833-2708	833-3008	833-3208	833-3508	833-3708	833-4008	833-4508	833-5008
10mm	833-2210	833-2510	833-2710	833-3010	833-3210	833-3510	833-3710	833-4010	833-4510	833-5010
12mm	833-2212	833-2512	833-2712	833-3012	833-3212	833-3512	833-3712	833-4012	833-4512	833-5012
15mm	833-2215	833-2515	833-2715	833-3015	833-3215	833-3515	833-3715	833-4015	833-4515	833-5015

For additional information, or to order this product, please call us on **01844 340 620**, or email info@aprmedtech.com

Manufactured by:



www.brosmed.com

Supplied exclusively in the UK by:



aprmedtech.com
@aprmedtech

APR Medtech Limited

The Sanderum Centre,
30a Upper High Street,
Thame, Oxfordshire, OX9 3EX

t. +44 1844 340 620
f. +44 1844 340 621
e. info@aprmedtech.com

apr medtech

POTTM PTCA^{NC}

Balloon Dilatation Catheter

A dedicated balloon for:
Proximal Optimisation Technique
Distal Optimisation Technique



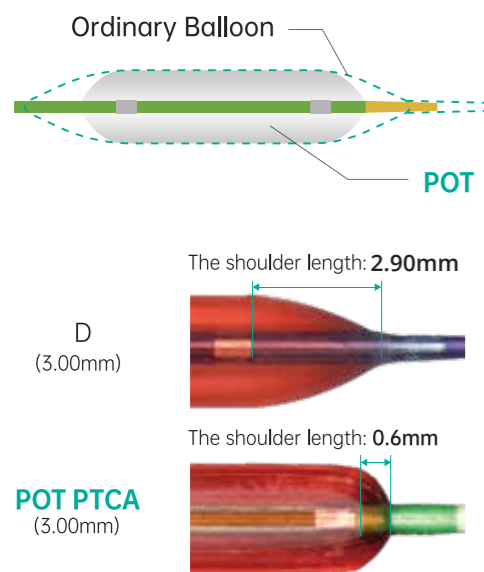
www.aprmedtech.com

POTTM PTCA^{NC}

Balloon Dilatation Catheter

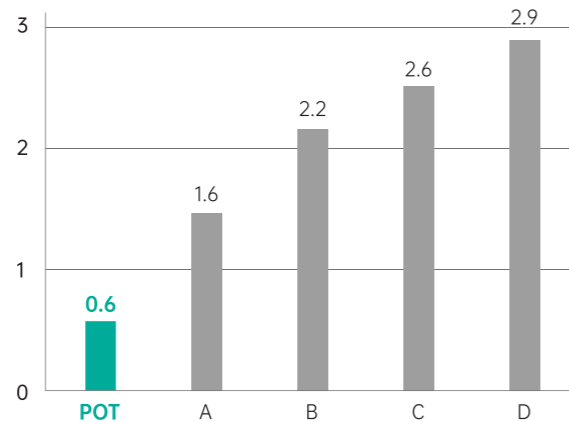
A dedicated balloon for:
Proximal Optimisation Technique & Distal Optimisation Technique

- The extra short balloon shoulders reduce longitudinal balloon growth, minimising the potential for vessel trauma outside the treatment area.

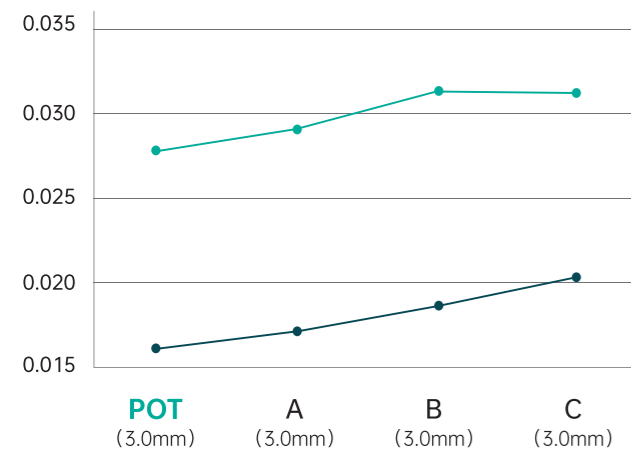


Balloon Shoulder Length

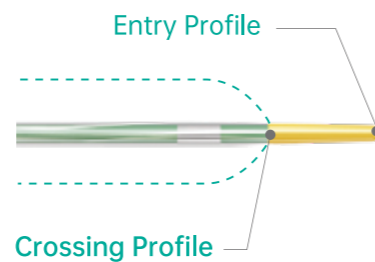
Comparison (mm)



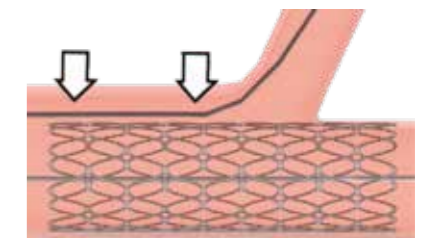
Ultra-low Entry And Crossing Profile



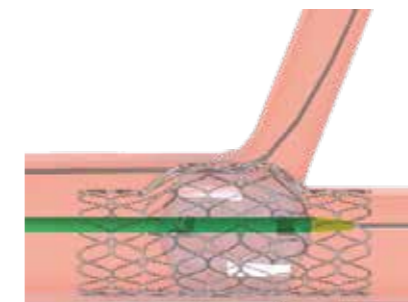
— Crossing Profile
— Entry Profile



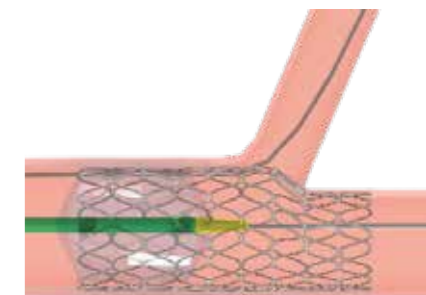
- The proximal segment of the stent can be evenly expanded to improve stent strut apposition



Pre POT



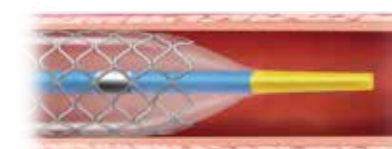
First Step



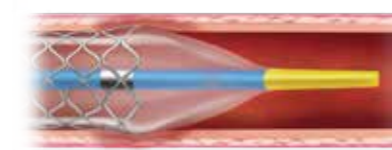
Second Step

After POT

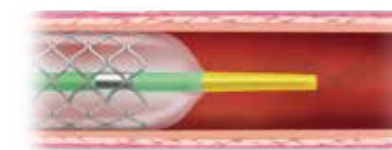
- Accurate post dilatation stenting.



Insufficient Expansion



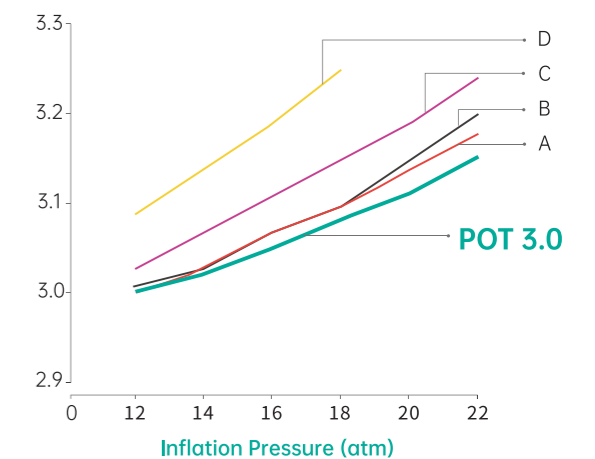
Excessive Expansion



Accurate Expansion

- Low compliance ensures controlled minimal growth up to RBP without any dog-bone effect.

Balloon Diameter (mm)



* Remark: Compliance curves 3.0 mm balloons (Values shown between NP and RBP) Data from product labels