



SIRONA

World's First Head-to-Head Comparison
of Sirolimus v/s Paclitaxel in Femoropopliteal Artery

MagicTouch PTA is Non-Inferior to Paclitaxel DCB

PRIMARY PATENCY - 12 MONTHS

73.8%

Sirolimus DCB
(152/206)

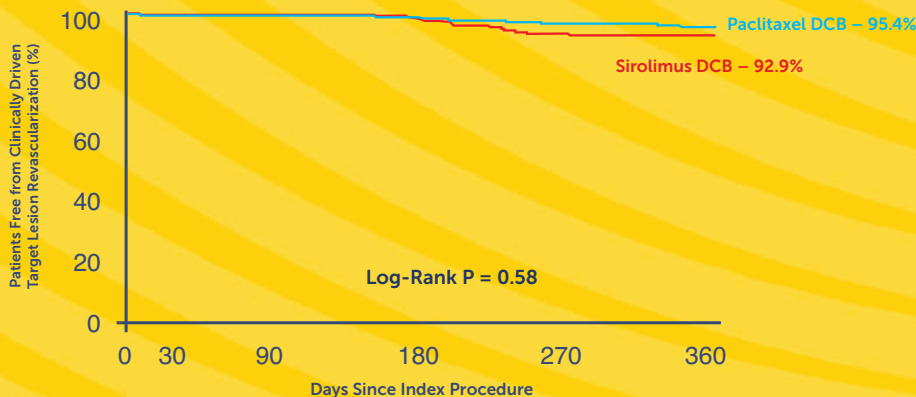
75.0%

Paclitaxel DCB
(147/196)

Rate difference: -1.2% (-9.7% to 7.4%) | P = 0.022 | (non-inferiority)

Primary patency of MagicTouch PTA is non-inferior to Paclitaxel DCB

FREEDOM FROM cdTLR* - 12 MONTHS



No significant difference between groups in freedom from cdTLR

Primary patency (PSVR < 2.4* and no TLR) at 12 months (non-inferiority to paclitaxel DCB: non-inferiority margin: -10%)*.

*Clinical Event Committee (CEC) approved *PSVR: Core Laboratory adjudicated

Annotation: Results presented at TCT 2024 Late-Breaking Clinical Trials:
Session II, in Collaboration with The Lancet.



MagicTouch PTA
SIROLIMUS COATED PTA BALLOON CATHETER

CAUTION: The law restricts these devices to sale by or on the order of a physician. Indications, contraindications, warnings and instructions for use can be found in the product labelling supplied with each device. For restricted use only in countries where product registered with applicable health authorities. Approved by US FDA for use in Clinical Trials only.